

Trajectories of mental health before and after old-age and disability retirement: a register-based study on purchases of psychotropic drugs ¹

by Mikko Laaksonen, PhD,² Niina Metsä-Simola, MSc, Pekka Martikainen, PhD, Olli Pietiläinen, MSc, Ossi Rahkonen, PhD, Raija Gould, PhD, Timo Partonen, PhD, Eero Lahelma PhD

¹ Appendix supplementary figures A–F

² Corresponding author: mikko.laaksonen@etk.fi

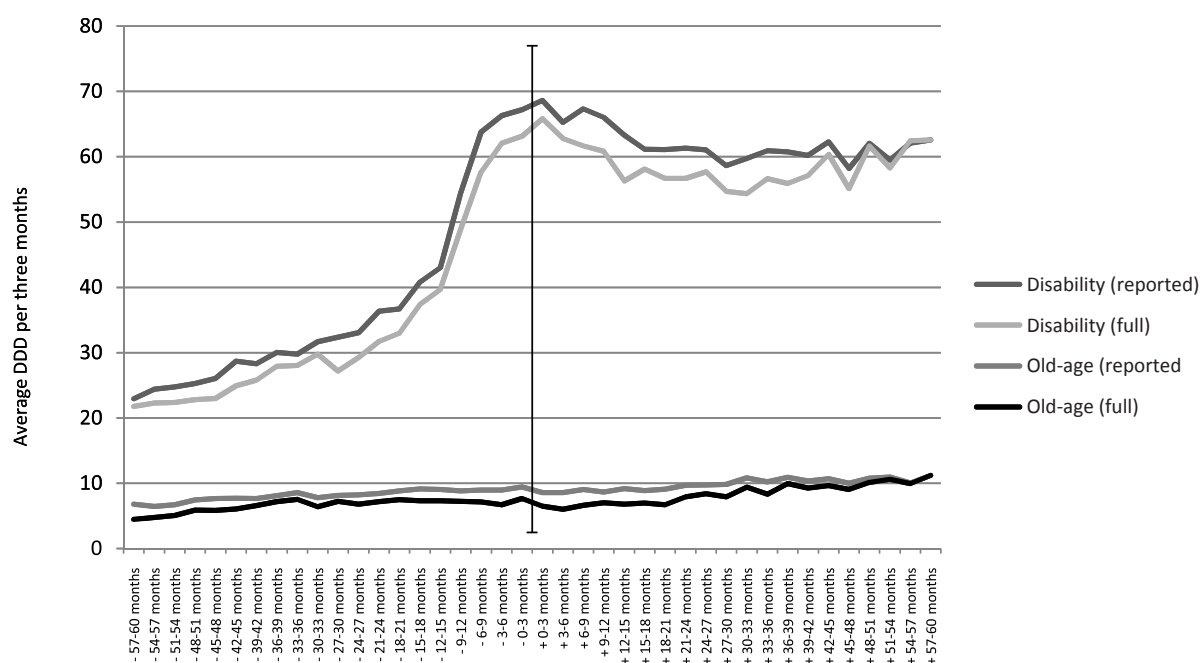


Figure A. Purchases of psychotropic medication before and after retirement, by retirement type. Comparison of the reported data with those who had full data for all intervals also after the retirement.

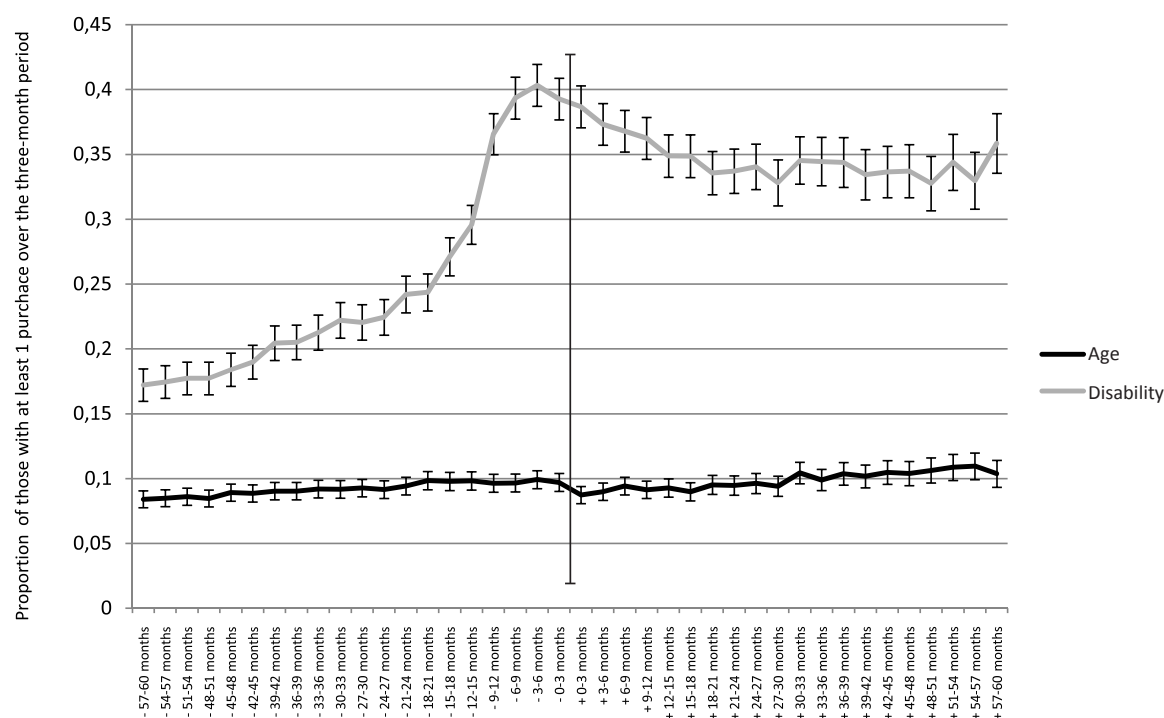


Figure B. Purchases of psychotropic drugs before and after retirement, by retirement type. Sensitivity analyses with a dichotomous measure of having at least one purchase over the 3-month period.

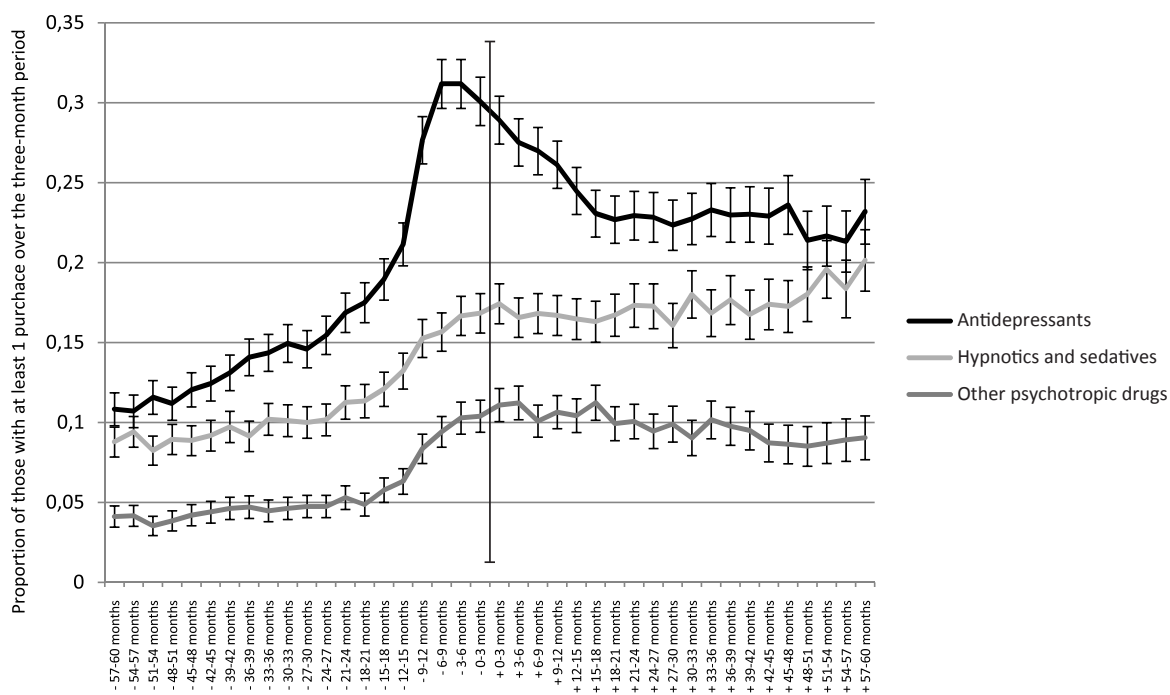


Figure C. Purchases of psychotropic drugs before and after disability retirement, by medication type. Sensitivity analyses with a dichotomous measure of having at least one purchase over the 3-month period.

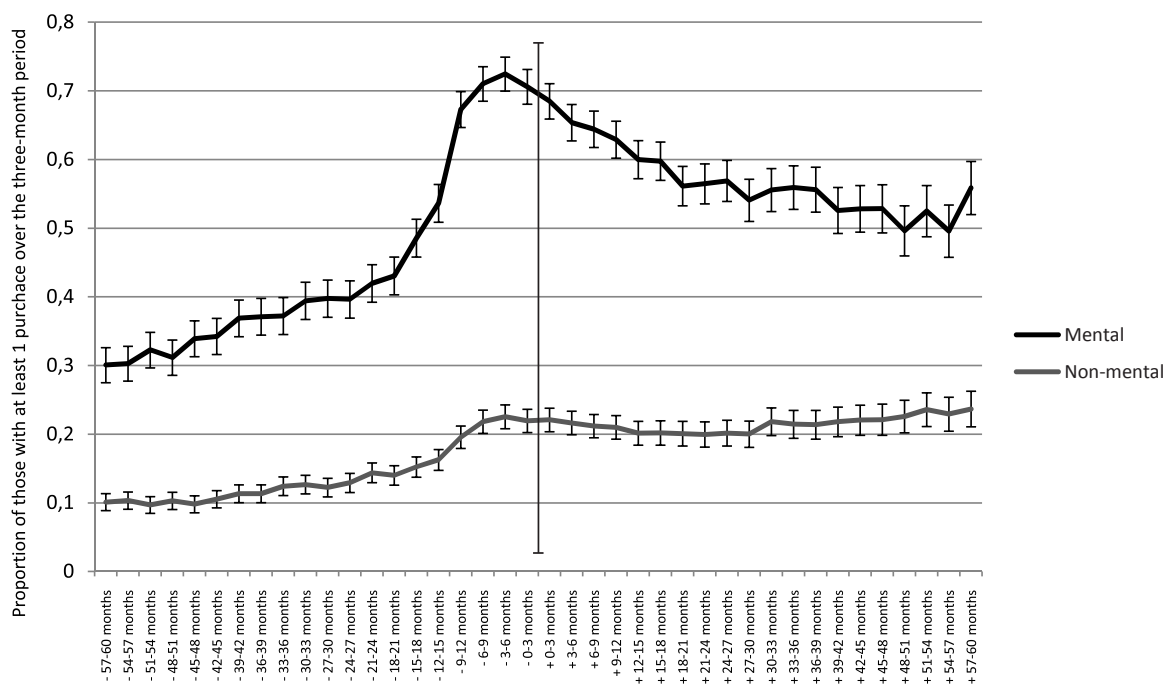


Figure D. Purchases of psychotropic drugs before and after disability retirement, by retirement diagnosis. Sensitivity analyses with a dichotomous measure of having at least one purchase over the 3-month period.

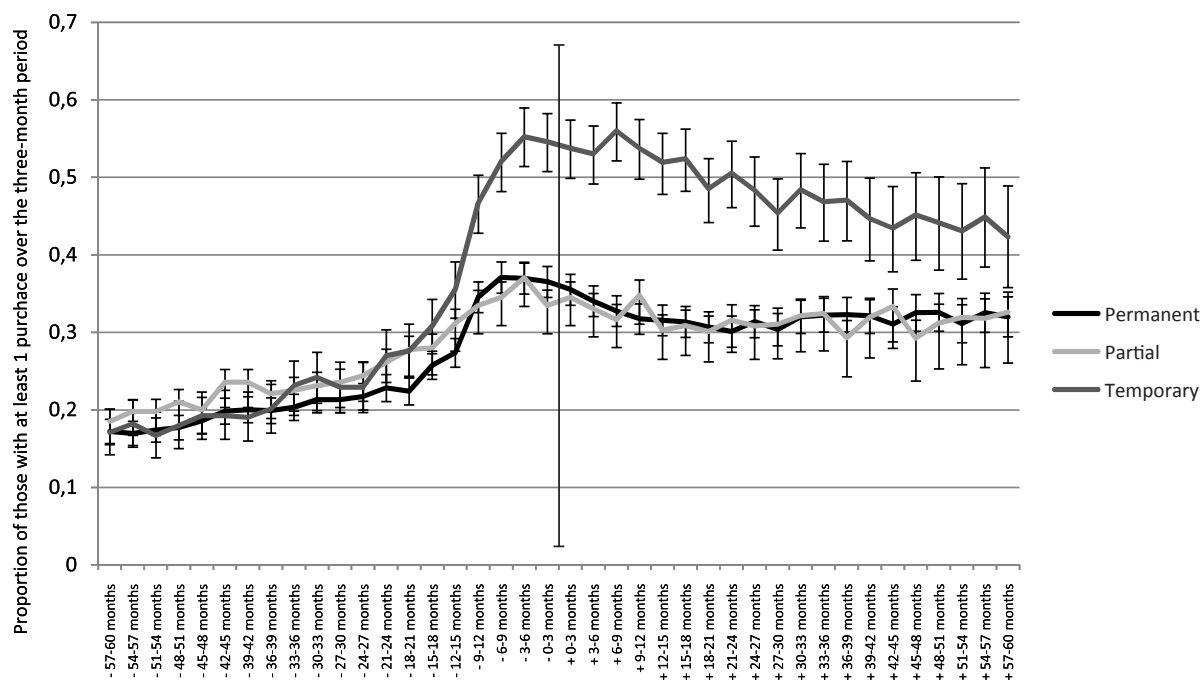


Figure E. Purchases of psychotropic drugs before and after disability retirement, by disability retirement type. Sensitivity analyses with a dichotomous measure of having at least one purchase over the 3-month period.

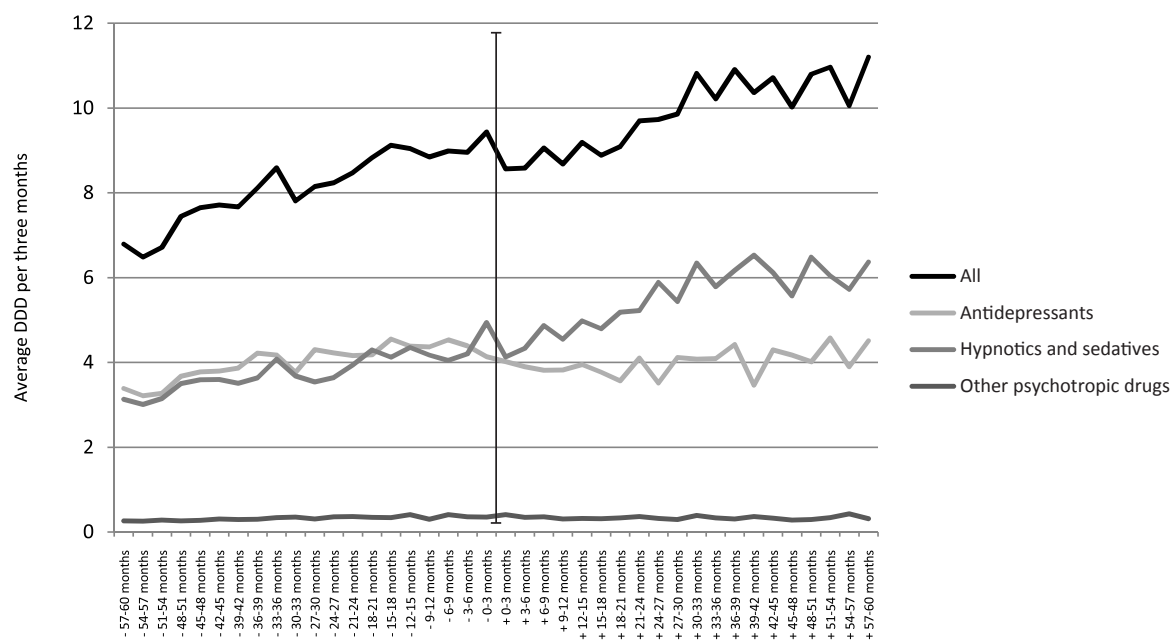


Figure F. Purchases of psychotropic drugs before and after old-age retirement, by medication type.