



Scand J Work Environ Health 2019;45(6):622-630

<https://doi.org/10.5271/sjweh.3816>

Published online: 20 Mar 2019, Issue date: 01 Nov 2019

The role of occupational class on the association between sickness absence and disability pension: A Swedish register-based twin study

by [Helgadóttir B](#), [Narusyte J](#), [Ropponen A](#), [Bergström G](#), [Mather L](#), [Blom V](#), [Svedberg P](#)

By using data from a large twin cohort we show that white-collar workers on long-term sickness absence (SA) due to musculoskeletal disorders are especially vulnerable to disability pension. Familial factors influence the association between SA due to mental disorders and disability pension among all workers, results not previously reported. Occupational groups are important to consider in the SA process.

Affiliation: Division of Insurance Medicine, Department of Clinical Neuroscience, Karolinska Institutet, Berzeliusväg 3, 171 77 Stockholm, Sweden. bjorg.helgadottir@ki.se

Refers to the following text of the Journal: [2011;37\(6\):464-472](#)

The following article refers to this text: [2023;49\(4\):283-292](#)

Key terms: [association](#); [disability pension](#); [employment](#); [genetics](#); [mental disorder](#); [musculoskeletal disorder](#); [occupational class](#); [prospective study](#); [register study](#); [register-based twin study](#); [sick leave](#); [sickness absence](#); [twin study](#); [twins](#)

This article in PubMed: www.ncbi.nlm.nih.gov/pubmed/30891611

Additional material

Please note that there is additional material available belonging to this article on the [Scandinavian Journal of Work, Environment & Health -website](#).



This work is licensed under a [Creative Commons Attribution 4.0 International License](https://creativecommons.org/licenses/by/4.0/).

The role of occupational class on the association between sickness absence and disability pension: A Swedish register-based twin study

by Björg Helgadóttir, PhD,¹ Jurgita Narusyte, PhD,¹ Annina Ropponen, PhD,^{1,2} Gunnar Bergström, PhD,^{3,4} Lisa Mather, PhD,¹ Victoria Blom, PhD,^{1,5} Pia Svedberg, PhD¹

Helgadóttir G, Narusyte J, Ropponen A, Bergström G, Mather L, Blom V, Svedberg P. The role of occupational class on the association between sickness absence and disability pension: A Swedish register-based twin study. *Scand J Work Environ Health*. 2019;45(6):622–630. doi:10.5271/sjweh.3816

Objectives The aim of this study was to examine the association between long-term sickness absence (LTSA) due to mental disorders and musculoskeletal disorders and all-cause disability pension (DP) among blue- and white-collar workers. A secondary objective was to examine the influence of familial factors on the associations.

Methods This was a prospective twin cohort study of 42 984 individuals (21–64 years at baseline), 3017 of whom had a new LTSA spell (>14 days) due to mental or musculoskeletal disorders in 2005–2006. Average follow-up time was 5.4 years. Survey data on occupational class and register data on LTSA and DP were used. Cox proportional hazards regression was applied to calculate hazards ratios (HR) with 95% confidence intervals (CI).

Results During follow-up, 989 participants went on disability. LTSA due to mental disorders and musculoskeletal disorders led to similar HR for DP among both white- and blue-collar workers when compared to white-collar workers not on LTSA (reference group). LTSA ≥6 months due to musculoskeletal disorders was associated with a higher risk of DP for white-collar (HR 31.50, 95% CI 20.45–48.52) than blue-collar (HR 17.64, 95% CI 13.08–23.78) workers when compared to the reference group. HR were lower in the discordant twin pair models for LTSA due to mental disorders than in the whole cohort.

Conclusions White-collar workers on LTSA due to musculoskeletal disorders are especially vulnerable to all-cause DP. This pattern was not present for LTSA due to mental disorders. Familial factors seem to influence the association between LTSA due to mental disorders and all-cause DP.

Key terms employment; genetics; mental disorder; musculoskeletal disorder; prospective study; register study; sick leave; twins.

Absence from the labor market due to sickness absence and disability pension (DP) is a growing problem in Western countries (1, 2). Sickness absence may have adverse outcomes such as an unfavorable impact on an individual's career advancement, income, and social interaction (3, 4). Furthermore, sickness absence has been associated with premature mortality (5).

Currently, the two most common reasons for sickness absence are mental and musculoskeletal disorders (6). Mental disorders are also the fastest growing reason for sickness absence in Sweden (7). Further, mental

disorders seem to lead to a longer duration of sickness absence compared to other diagnostic groups, and individuals with mental disorders also have the lowest rate of return to work (8). Poor working conditions such as high job demands, low job control, high effort–reward imbalance, and low social support can lead to mental ill health (9). However, the increase in sickness absence due to mental disorders is not yet fully understood.

Sickness absence is a part of healthcare and treatment and should be an opportunity for healing and rehabilitation before returning to work. However, in more

¹ Division of Insurance Medicine, Department of Clinical Neuroscience, Karolinska Institutet, Stockholm, Sweden.

² Finnish Institute of Occupational Health, Helsinki, Finland.

³ Intervention and Implementation Research for Worker Health Unit, Institute of Environmental Medicine, Karolinska Institutet, Stockholm, Sweden.

⁴ Centre for Musculoskeletal Research, Department of Occupational and Public Health Sciences, University of Gävle, Gävle, Sweden.

⁵ The Swedish School of Sport and Health Sciences, Stockholm, Sweden.

Correspondence to: Björg Helgadóttir, Division of Insurance Medicine, Department of Clinical Neuroscience, Karolinska Institutet, Berzeliusväg 3, 171 77 Stockholm, Sweden. [E-mail: bjorg.helgadottir@ki.se]

severe cases, prolonged sickness absence or disability pension may be necessary (10, 11). Previous studies have shown some unintended detrimental side-effects of prolonged sickness absence (12), though causality is unclear as this could be due to a complex interplay of disease, treatment and other circumstances surrounding the individual. The nature and severity of the disorder do not seem to be the only driving force behind this transition; other factors are also of importance (13). One study found that among sickness absentees, higher age and longer sick leave spells were risk factors for all-cause DP while having higher education and young children were protective factors (14). Furthermore, in the same paper, investigators reported sickness absence due to mental disorders had a higher risk of all-cause DP compared to sickness absence due to musculoskeletal disorders (14).

Low socioeconomic position is associated with sickness absence and DP (15–17), and occupational class is frequently used as a proxy for socioeconomic position. Occupational class is often categorized as white- or blue-collar workers. In broad terms, the distinction between the two lies in that white-collar workers perform non-manual office work while blue-collar workers perform manual work. Manual workers seem to have a higher risk of DP compared to non-manual workers (18–20), and lower level white-collar workers are more at risk than their higher level counterparts (20). The higher risk of DP within blue-collar workers can be explained by physical working conditions and, to some extent, by lifestyle (21). However, less is known about whether occupational class (ie, blue- or white-collar work) plays a role in the transition from sickness absence to DP, especially long-term sickness-absence (LTSA). Studies of influential factors on the pathway from LTSA to DP are largely lacking. Therefore, we propose to explore occupational class in the present study based on previous knowledge of the association with DP.

Moreover, familial factors (genetic factors and the environment that twins share, primarily in childhood) might also contribute to explaining the risk of moving from LTSA to DP. Familial factors can be examined using a discordant twin-study design. Twin studies take advantage of the natural experiment that there are two types of twins, identical and fraternal, who share different amount of genetics (100% and 50%, respectively). Both types of twins also share environment to the same extent. By using a matched analysis of the discordant twin pairs, where one twin experienced LTSA and the other did not, we can adjust for familial factors. Previous twin studies have shown that both LTSA and DP are moderately influenced by genetic factors (22–25). Although a few studies have shown that the associations between sociodemographic factors, such as occupational class and education, and DP are not influenced by famil-

ial factors (19, 20), more studies are needed to confirm these findings, especially while also studying LTSA across occupational classes.

The aim of this study was to investigate the association between LTSA due to mental disorders and musculoskeletal disorders and all-cause DP among blue- and white-collar workers (occupational class). Additional objectives were to examine the influence of familial factors on the association between LTSA and all-cause DP and to study familial influences on the associations across occupational class.

Methods

This is a prospective twin cohort study based on data from the Swedish Twin Project of Disability Pension and Sickness Absence (STODS). Data from two surveys included in STODS were used. Respondents to SALT (Screening across the Lifespan Twin) Study consists of twins born 1925–1958 while respondents to STAGE (Study of Twin Adults: Genes and Environment) consists of twins born 1959–1985. The SALT interview was conducted between January 1998 and March 2003 while the STAGE cohort was invited to answer a web-based questionnaire in 2005, with largely the same questions as in SALT. In total, 64 757 twins answered either the SALT or STAGE surveys conducted by the Swedish Twin Registry (26). All participants in the surveys gave informed consent. The Regional Ethical Review Board in Stockholm, Sweden, approved this study (Dnr: 2007/524-31, Dnr: 2010/1346-32/5, and Dnr: 2014/311-32).

Data were also obtained from several national registers: (i) MiDAS held by the National Social Insurance Agency, contains information on LTSA and DP including ICD-diagnosis, duration, and grade; (ii) LISA held by Statistics Sweden contains information on old age pension, work status, and education; and (iii) Cause of death register held by the National Board of Health and Welfare contains information on the date of death. The data from these registers and surveys were linked using the Swedish 10-digit personal identification number.

We excluded those who at baseline (1 January 2007) were: deceased (cause of death register), missing from the LISA register either in 2005 or 2006, ≥ 65 years, and on old age pension in either 2005 or 2006 (LISA), on all-cause DP (MiDAS). Those who had no follow-up time due to missing data in LISA in 2007 and 2008 were also excluded (figure 1).

The final sample included a total of 42 984 individuals. Of those, 14 621 were complete twin pairs; 5050 monozygotic (MZ) pairs, 4585 same-sex and 4658 opposite-sex dizygotic (DZ) pairs, and 328 with unknown zygosity. Additionally, data were available

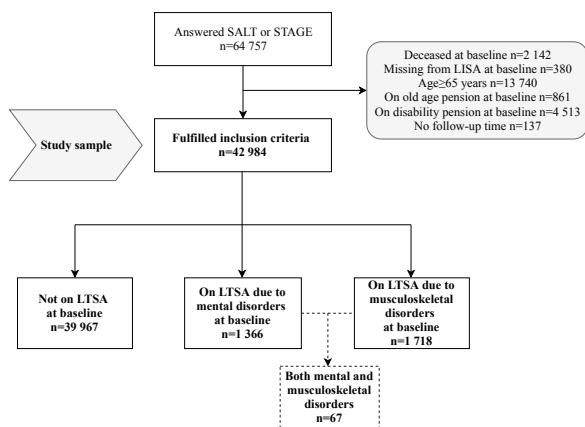


Figure 1. Flow chart of the study population, inclusion and exclusion criteria. LTSA: Long-term sickness absence (>14 days).

for 13 742 twins without co-twins, ie, the twin sibling did not respond to SALT or STAGE, or the twin sibling was excluded based on the above criteria. For details on zygosity determination in the Swedish Twin Registry see Magnusson et al (27). Throughout the rest of the paper, N refers to the total number of individuals, not twin pairs, unless otherwise specified.

The mean age of the participants was 43.8 (standard deviation 12.4) years and roughly half were women (52.8%) (table 1). The sample comprised 53.2% white- and 46.8% blue-collar workers.

Exposure – sickness absence

All individuals in Sweden >16 years, with an income from work or unemployment benefits, can receive sickness benefits paid by the Social Insurance Agency when disease or injury has caused reduced work capacity for >14 days. Employees receive sick pay from their employers during the first 14 days after a qualifying day without benefits (self-employed usually have more qualifying days). Unemployed individuals have one qualifying day and receive sick pay from the Social Insurance Agency from the second day.

The first LTSA spell (>14 consecutive days between 1 January 2005 to 31 December 2006) either due to mental (ICD-10 codes F00-F99) or musculoskeletal (ICD-10 codes M00-M99) diagnoses, respectively, were used as exposure variables. LTSA was used as both a binary variable (yes/no) and categorized as the duration of LTSA based on net days (calculated by adding up the grade of the LTSA days). Three categories were created: no LTSA, LTSA <6 months, and LTSA ≥6 months.

The majority of LTSA spells were <6 months for both mental (78.5%) and musculoskeletal diagnoses (85.8%).

Outcome – disability pension

A national social security DP scheme covers all citizens in Sweden. To be eligible for disability pension benefits, workers require a medically confirmed disorder or injury that permanently reduces work capacity by ≥25%. The Social Insurance Agency can grant a DP that covers about 65% of lost income based on a thorough assessment of the level of work incapacity.

The participants were followed up for all-cause DP from 1 January 2007 to 31 December 2012. Participants were censored for death, emigration, and old age pension. If a person was missing for two years in the LISA register, emigration date was set at 1 January of the first of those two years. As there was no information on the exact date of old age pension, we chose 1 July of the year as the censoring date. The average follow-up time was 5.4 years.

Occupational class

Occupational class was obtained from the questionnaire data. The answers from an open question (the same question in both SALT and STAGE): “what has been your main occupation for most of your working life?” were coded using the SSYK system (the standard for Swedish occupational classification) (28). SSYK has ten categories which were dichotomized into white- or blue-collar workers following a simplified version of the classification by Thell (29), which is based on what the work entails, education required, and supervision responsibility. The white-collar workers consist of legislators, senior officials, and managers; professionals, technicians and associate professionals; and clerks. The blue-collar workers include service workers and shop sales workers; skilled agricultural and fishery workers; craft and related trades workers; plant and machine operators and assemblers; and elementary occupations. For some individuals in SALT, the SSYK classification was missing. To minimize missing values on this variable, we replaced missing values with the NYK classification code (Nordic Occupational Classification) (28) when available (N=112), however, 15.2% (N=6545) were still missing on this variable.

Other covariates

Marital status was based on the survey question: “What is your current marital status?”. The responses were categorized into married/cohabiting or other (included: divorced, separated, living separately, widow/widower). The cohort effect was binary, ie, belonging to either SALT or STAGE. Sex and date of birth were extracted from the Swedish Twin Registry, the latter of which was used to calculate the age of the participants on 1 January

Table 1. Characteristics of the sample, stratified by long-term sickness absence (LTSA, >14 days) status at baseline. [SD=standard deviation.]

Variables	All participants	No LTSA ^a	LTSA ^a
	Mean age 43.8 (SD 12.4) years	Mean age 43.5 (SD 12.5) years	Mean age 46.7 (SD 11.2) years
	N (%)	N (%)	N (%)
Occupational class			
White-collar	19 378 (53.2)	18 185 (54.0)	1193 (43.6)
Blue-collar	17 061 (46.8)	15 520 (46.1)	1541 (56.4)
Sex			
Men	20 290 (47.2)	19 248 (48.2)	1042 (34.5)
Women	22 694 (52.8)	20 719 (51.8)	1975 (65.5)
Zygosity			
Monozygotic	13 495 (31.4)	12 556 (31.4)	939 (31.1)
Dizygotic same sex	13 960 (32.5)	12 990 (32.5)	970 (32.2)
Dizygotic opposite sex	14 421 (33.6)	13 387 (33.5)	1034 (34.3)
Unknown zygosity	1108 (2.6)	1034 (2.6)	74 (2.5)
Cohort			
SALT (1925-1958)	18 800 (43.7)	17 234 (43.1)	1566 (51.9)
STAGE (1959-1985)	24 184 (56.3)	22 733 (56.9)	1451 (48.1)
Education			
Elementary	5338 (12.4)	4864 (12.2)	474 (15.7)
Secondary	20 905 (48.7)	19 231 (48.1)	1674 (55.5)
Higher education	16 728 (38.9)	15 860 (39.7)	868 (28.8)
Employment status			
Not working	5027 (11.7)	4797 (12.0)	230 (7.6)
Working	37 957 (88.3)	35 170 (88.0)	2787 (92.4)
Urban/rural environment			
Urban	30 753 (71.6)	28 691 (71.8)	2062 (68.4)
Semi-urban/rural	12 231 (28.5)	11 276 (28.2)	955 (31.7)
Marital status			
Married/Co-habiting	30 284 (71.5)	28 109 (71.4)	2175 (72.9)
Single	12 062 (28.5)	11 253 (28.6)	809 (27.1)
Children <18 living at home			
No	27 022 (62.9)	25 147 (62.9)	1875 (62.2)
Yes	15 962 (37.1)	14 820 (37.1)	1142 (37.9)

^a Due to mental and/or musculoskeletal disorders.

2007. Information on having children >18 years living at home (yes/no), urban/rural environment (urban or semi-urban/rural), and employment status ie, being currently employed (yes/no), education (elementary, secondary or higher education) were obtained from the LISA register.

Statistical analyses

The association between LTSA and all-cause DP was estimated using Cox proportional hazards regression analyses. The results were presented as hazard ratios (HR) with 95% confidence intervals (CI). The unit of the follow-up time was days. The condition of the proportional hazards assumption was explored via graphs and was met in all the models. We ran two separate analyses: (i) for LTSA due to mental disorders and (ii) for LTSA due to musculoskeletal disorders. The main model was adjusted for sex, age, cohort effect, children <18 years living at home, marital status, urban/rural environment, and employment status. In all models, the standard errors were adjusted for pair identity to take into account the within-pair correlations.

The presence of interaction between occupational class and LTSA was explored using relative excess risk

due to interaction (RERI) (30). The RERI is a measure of departure from additivity. It will indicate whether the observed effect of two variables combined is larger (or smaller) than the sum of the individual effects of the two variables, ie, additive interaction. A RERI of 0 suggests no interaction while a RERI >0 suggest a positive additive interaction and RERI<0 suggests a negative additive interaction (30). We calculated the RERI based on the main, fully adjusted model using the Andersson et al method (31). To do this we constructed variables for every combination of occupational class and LTSA possible, with white-collar workers who had not had LTSA >14 days as a reference group.

Familial factors were adjusted for by applying conditional Cox proportional hazards models. The analyses were based on same-sex discordant twin pairs to adjust for familial (genetics and shared family environment) confounding (32). A twin pair was treated as discordant if only one twin of a pair had all-cause DP during follow-up. In discordant twin pair analyses, twins in a pair are optimally matched on genetics (MZ 100% and DZ on average 50%) and shared environmental factors (100%) and for age and sex. If the association found in the age and sex-adjusted analyses of the whole sample disappears or becomes weaker in the analyses of discordant twin pairs, there is a suggestion that familial factors are influencing the association. If a stronger association is observed after controlling for familial factors this would instead suggest a causal link between the exposure and the outcome (32). MZ and DZ twin pairs were pooled for the analyses as there was not enough power to stratify by zygosity. We also did some stratified analyses, ie, investigating the effect of LTSA across occupational class and reported these in the appendix.

Analyses were conducted using Stata IC 12.1 (Stata Corp, College Station, TX, USA), and the significance level was set at $\alpha=0.05$.

Results

Among the 42 984 participants, there were 989 cases of all-cause DP. As the average follow-up was 5.4 years, the incidence rate (IR) was 423.45 cases per 100 000 person-years. There were 3017 cases of LTSA, of which 1299 and 1651 cases were due to mental disorders and musculoskeletal disorders, respectively. Additionally, 67 individuals had both a mental and musculoskeletal LTSA spell during the inclusion period. As excluding these 67 cases did not lead to important changes in the results, they were included in the analysis of each disorder to preserve statistical power.

The proportion of individuals among white-collar workers granted all-cause DP was 2.0% (379/19 378).

The corresponding proportion of blue-collar workers was 3.0% (504/17 061). The relative risk ratio (RR) for white- versus blue-collar (white-collar reference group) was 1.51 (95% CI 1.32–1.72). Looking only at those who were on LTSA due to mental disorders, the proportion of individuals granted all-cause DP was 8.3% (56/672) for white-collar workers and 9.9% (55/556) for blue-collar workers. The RR between white- and blue-collar workers among those on LTSA due to mental disorders was 1.19 (95% CI 0.83–1.70). Finally, when restricting to those who were on LTSA due to musculoskeletal disorders, 10.1% (54/536) of white-collar workers and 12.0% (124/1032) of blue-collar workers were granted all-cause DP, with an RR of 1.19 (95% CI 0.88–1.61).

Sickness absence due to mental disorders

For those on LTSA due to mental disorders, the HR was 4.37 (95% CI 3.61–5.28) in the fully adjusted model compared to those not on LTSA (supplementary table S1, www.sjweh.fi/show_abstract.php?abstract_id=3816). When compared to the reference group of white-collar workers without LTSA, both blue- and white-collar workers with LTSA due to mental disorders had a higher risk of all-cause DP (table 2).

When LTSA duration was explored (table 2), there was an increased risk of all-cause DP among blue-collar workers without LTSA (HR 1.51, 95% CI 1.28–1.78), blue-collar workers that had been LTSA for 14 days to

6 months (HR 3.73, 95% CI 2.53–5.49), and blue-collar workers that had been LTSA for ≥ 6 months (HR 12.91, 95% CI 8.26–20.20) compared to the reference group of white-collar workers without LTSA. Similar patterns were seen for white-collar workers, ie, rising risk with longer LTSA. The RERI for LTSA due to mental disorders and occupational class were all close to 0 or rather low (table 2), which suggests that there was no or negligent interaction between the two variables.

Sickness absence due to musculoskeletal disorders

Those on LTSA due to musculoskeletal disorders had an HR of 5.04 (95% CI 4.28–5.93) for all-cause DP in the fully adjusted model, compared to those who were not on LTSA due to musculoskeletal disorders (supplementary table S2, www.sjweh.fi/show_abstract.php?abstract_id=3816). Compared to being a white-collar worker without LTSA, there was an increased risk of all-cause DP for both blue- and white-collar workers that had been on LTSA (table 3).

Categorizing LTSA due to musculoskeletal disorders according to duration revealed that when compared to white-collar workers without LTSA, both blue- and white-collar workers with LTSA for >14 days to <6 months had similarly increased risk of all-cause DP (white-collar: HR 3.03, 95% CI 2.04–4.510; blue-collar: HR 4.076, 95% CI 3.087–5.386). However, the risk of all-cause DP was much higher for white-collar work-

Table 2. The association between long-term sickness absence (LTSA, >14 days) due to *mental disorders* at baseline and all-cause disability pension during follow-up, interaction by occupational class (N=42 984). [Blue=blue-collar worker; CI=confidence interval; HR=hazard ratio; IR=incidence rate; ref=reference group; RERI=relative excess risk due to interaction; while=white-collar worker.] **Bold=P<0.05.**

LTSA × occupational class × occupation	N	Person years	IR per 100 000 person years	HR (95% CI) ^a	RERI (95% CI)
Dichotomized					
No LTSA					
White	18 706	99 927	323	Ref	
Blue	16 505	88 817	506	1.50 (1.27–1.77)	
LTSA					
White	672	3488	1605	4.77 (3.59–6.35)	
Blue	556	2897	1899	5.48 (4.04–7.42)	0.21 (–1.76–2.17)
Duration					
No LTSA					
White	18 706	99 927	323	Ref	
Blue	16 505	88 817	506	1.51 (1.28–1.78)	
LTSA <6 months					
White	526	2821	815	2.44 (1.60–3.72)	
Blue	440	2356	1273	3.73 (2.53–5.49)	0.80 (–0.89–2.49)
LTSA ≥ 6 months					
White	146	667	4950	14.15 (9.90–20.24)	
Blue	116	541	4623	12.91 (8.26–20.20)	–1.73 (–9.14–5.69)

^a Adjusted for sex, age, participation in SALT or STAGE, children under 18 living at home, marital status, urban/rural environment, and employment status.

Table 3. The association between long-term sickness absence (LTSA, >14 days) due to *musculoskeletal disorders* at baseline and all-cause disability pension during follow-up, interaction by occupational class (N=42 984). [Blue=blue-collar worker; CI=confidence interval; HR=hazard ratio; IR=incidence rate; ref=reference group; RERI=relative excess risk due to interaction; while=white-collar worker.] **Bold=P<0.05.**

LTSA × occupational class × occupation	N	Person years	IR per 100 000 person years	HR (95% CI) ^a	RERI (95% CI)
Dichotomized					
No LTSA					
White	18 842	10 0812	322	Ref	
Blue	16 029	86 660	438	1.35 (1.14–1.60)	
LTSA					
White	536	2604	2074	5.52 (4.11–7.41)	
Blue	1032	5054	2454	6.12 (4.87–7.68)	0.23 (–1.67–2.13)
Duration					
No LTSA					
White	18 842	10 0812	322	Ref	
Blue	16 029	86 660	438	1.36 (1.15–1.61)	
LTSA <6 months					
White	473	2385	1132	3.03 (2.04–4.50)	
Blue	859	4371	1578	4.07 (3.08–5.38)	0.66 (–0.87–2.19)
LTSA ≥ 6 months					
White	63	219	12 332	31.48 (20.43–48.48)	
Blue	173	682	8060	17.69 (13.12–23.85)	–14.23 (–28.22––0.23)

^a Adjusted for sex, age, participation in SALT or STAGE, children under 18 living at home, marital status, urban/rural environment, and employment status.

ers who had been on LTSA for ≥ 6 months (HR 31.50 95% CI 20.45–48.52) than for blue-collar workers (HR 17.694 95% CI 13.0812–23.7885) where both were compared to white-collar workers not on LTSA. The RERI for LTSA due to musculoskeletal disorders and occupational class were rather low, except for the LTSA of ≥ 6 months (RERI -14.23). This suggests that that occupational class modifies the relationship between LTSA due to musculoskeletal disorders and disability pension when the duration of LTSA is ≥ 6 months.

Discordant twin analyses

The results from the discordant twin pair analyses should be compared to that of the age and sex-adjusted results (table 4). An effect of familial factors is indicated if the associations found in the sex and age-adjusted models differ considerably in the discordant twin models. Our results show that the HR diluted, frequently to statistical non-significance, and are smaller for the association between LTSA due to mental disorders and all-cause DP (table 4) for both white- and blue-collar workers. This suggests that familial factors explain some of the association between LTSA due to mental disorders and all-cause DP. The adjustment for familial factors did not markedly change the results for LTSA due to musculoskeletal disorders and all-cause DP (table 4). There were 676 twins discordant on all-cause DP, and 4314 were discordant on occupational class.

Discussion

In this study, we aimed to investigate if occupational class and familial factors influenced the associations between LTSA due to mental or musculoskeletal disorders and DP. We found that occupational class had an impact on the association between LTSA due to musculoskeletal – but not mental – disorders and all-cause DP. We also found that familial factors explained some of the association between LTSA due to mental disorders and all-cause DP, though the power was somewhat limited.

LTSA due to both mental and musculoskeletal disorders was found to increase the risk for future all-cause DP in both blue- and white-collar workers, which is in line with previous studies (10, 33). Earlier research states that both higher education and income are protective against moving from sickness absence to all-cause DP (14, 34, 35). Although our results are largely in line with this, the risk of all-cause DP was noticeably higher for white-collar workers when the LTSA due to musculoskeletal disorders was ≥ 6 months than for their blue-collar worker counterparts. The effect modification was considerable, as shown by the high RERI. One explanation for this slight discrepancy

Table 4. The association between long-term sickness absence (> 14 days) due to mental and musculoskeletal disorders at baseline, respectively, and all-cause disability pension during follow-up, interaction by occupational class (N=42 984 for the whole cohort and N=676 for discordant twins (338 twin pairs). [Blue=blue-collar worker; CI=confidence interval; HR=hazard ratio; IR=incidence rate; ref=reference group; RERI=relative excess risk due to interaction; while=white-collar worker.] **Bold=P<0.05.**

	Sex and age-adjusted model		Discordant twin model	
	N	HR (95% CI) ^a	N	HR (95% CI)
LTSA due to mental disorders * occupational class				
Dichotomized				
No LTSA				
White	18 706	Ref	167	Ref
Blue	16 505	1.76 (1.52–2.03)	180	1.57 (0.16–2.10)
LTSA				
White	672	4.69 (3.53–6.23)	7	2.81 (1.16–5.86)
Blue	556	6.67 (4.99–8.91)	18	1.85 (0.98–3.50)
Duration				
No LTSA				
White	18 706	Ref	167	Ref
Blue	16 505	1.76 (1.52–2.03)	180	1.57 (1.16–2.11)
LTSA <6 months				
White	526	2.40 (1.58–3.66)	2	0.75 (0.25–2.25)
Blue	440	4.45 (3.06–6.48)	14	1.32 (0.61–2.85)
LTSA ≥ 6 months				
White	146	13.96 (9.79–19.89)	5	10.27 (1.91–55.21)
Blue	116	16.63 (10.84–25.51)	4	12.99 (3.80–44.34)
LTSA due to musculoskeletal disorders * occupational class				
Dichotomized				
No LTSA				
White	18 842	Ref	160	Ref
Blue	16 029	1.55 (1.33–1.80)	14	1.34 (0.98–1.81)
LTSA				
White	536	5.43 (4.05–7.27)	158	4.89 (2.30–10.81)
Blue	1032	6.77 (5.50–8.33)	40	4.48 (2.37–8.46)
Duration				
No LTSA				
White	18 842	Ref	160	Ref
Blue	16 029	1.55 (1.33–1.80)	14	1.32 (0.97–1.79)
LTSA <6 months				
White	473	3.00 (2.02–4.44)	8	4.92 (2.14–11.28)
Blue	859	4.45 (3.43–5.78)	24	2.71 (1.37–5.39)
LTSA ≥ 6 months				
White	63	29.39 (19.15–45.11)	8	8.79 (1.10–70.03)
Blue	173	19.75 (14.87–26.24)	16	8.89 (3.02–26.17)

may be that income and education are not interchangeable with occupational class (36) since the physical work environment is different between occupational classes. That is, blue-collar workers may need longer sick leave to recover from a musculoskeletal disease or injury than a white-collar worker and, hence, white-collar workers with sick leave > 6 months represent the most severe cases.

Working conditions are another possible explanation for why white-collar workers had higher risk estimates for LTSA due to musculoskeletal disorders ≥ 6 months. Both the physical and psychosocial work environment have been associated with musculoskeletal problems (37, 38), which, in turn, may be of importance for LTSA. There are perhaps more psychosocial risk factors explaining musculoskeletal disorders among white-collar workers.

For instance, compared to blue-collar workers, physical risk factors like heavy lifting and awkward work positions are much less prevalent among white-collar workers. This may indicate that it is harder to make successful work adjustments when psychosocial risk factors are involved. Indeed, this may be part of the explanation for the higher within-group risk to receive all-cause DP among white-collars. A health selection might also play a role, ie, that those prone to musculoskeletal disorders choose a less physically demanding career such as office work, while only those with good physical fitness are able to perform the more physically demanding blue-collar work.

The higher risk for all-cause DP among white- compared to blue-collar workers was only observed for those who were on LTSA due to musculoskeletal disorders ≥ 6 months. Examining LTSA as a binary variable can mask this effect. In clinical terms, shorter sick leave spells would more likely be attributed to workload, stress, flu seasons, etc, while longer spells reflect a more severe underlying condition. Other studies have also demonstrated the importance of looking at different sickness absence durations as predictors for DP (14, 34). Altogether, future studies should include LTSA duration.

Familial factors, ie, genes and early shared environment, influenced the association between LTSA and DP due to mental disorders but did not seem to influence the association between LTSA and DP due to musculoskeletal disorders. This means that genetic and early environmental factors, such as upbringing and family relationships, that contribute to liability for mental disorders may also explain why some transfer from LTSA to DP. Familial factors have been found to influence the liability to both LTSA and DP (24, 25), and a previous study on whether familial factors influence the association between LTSA and DP concluded that familial factors only played a small role in the association (11). However, in that study, all sickness absence diagnoses were pooled together and, thus, might have masked the effects that were observed for LTSA due to mental disorders in the current study. Furthermore, our results are supported by studies that show that mental disorders are heritable (39).

Strength and limitations

The strengths of this study lie in the relatively large sample size and the high quality of the data. The registers cover the whole population, which means we captured all cases of LTSA and DP benefits with no loss to follow-up. Additionally, we differentiated between LTSA diagnoses and quantified the duration of LTSA. Using data from twins enabled us to investigate confounding by familial factors, which can be an important explanatory factor.

The limitations of the study include no data on short-term sickness absence (≤ 14 days), however, LTSA is

probably more important for the risk of transitioning to all-cause DP (14, 34). Another possible design choice would have been to follow the participants not only for disability pension but also for sickness absence as there could be a long interval between the sickness absence spell and disability pension. However, an earlier study with a long follow-up has shown that there is still an effect of sickness absence on disability pension, even after a period of up to 13 years (11). There were some subgroup analyses that were not possible due to low numbers, such as studying more categories of LTSA duration or specific occupational classes. This leads to a rather crude measure of occupation class, which might have masked some associations that a more detailed categorization might have captured. Even though the discordant twin pair analyses may have been low in power, the results give an indication of whether the associations were affected by familial factors. Finally, there was an interval of up to about 7 years between the collection of questionnaire data of the two surveys. We tried to minimize the potential impact of this discrepancy by controlling for cohort effects in the analyses. Importantly, our main variable of interest from the questionnaire (occupational class) asked for the main occupation during most of the respondents' working life. This variable should, therefore, not have been much affected by the passage of time, especially in the older cohort which answered the questionnaire before the younger cohort.

Concluding remarks

Our results indicate that occupational class plays an important role in the association between LTSA due to musculoskeletal disorders and all-cause DP, with white- and blue-collar workers showing different sick leave patterns leading to all-cause DP. This pattern was not found for LTSA due to mental disorders. We also found that familial factors explained part of the association between LTSA due to mental disorders and DP. Taken together, these results indicate that the pathways from LTSA to all-cause DP are complex and differ depending on the underlying disorder, occupational class, and the importance of familial factors.

Acknowledgments

AFA Insurance financially supported this study (160138). STODS was supported by the Swedish Research Council (521-2008-3054 and 2017-00624), the Swedish Research Council for Health, Working Life and Welfare (2007-0830), and the Swedish Society of Medicine. We acknowledge the Swedish Twin Registry for access to data. The Swedish Twin Registry is managed by

Karolinska Institutet and receives funding through the Swedish Research Council under the grant no 2017-00641. The Study of Twin Adults: Genes and Environment (STAGE) was supported by the National Institute of Health, USA, (Grants DK 066134 and CA 085739). Screening Across the Lifespan Twin study (SALT) was funded by the Swedish Council for the Planning and Coordination of Research and by a grant from the National Institutes of Health, USA, (Grant AG 08724).

Conflict of interest

The authors declare no conflicts of interest.

References

- Gimeno D, Benavides FG, Benach J, Amick BC 3rd. Distribution of sickness absence in the European Union countries. *Occup Environ Med* 2004 Oct;61(10):867–9. <https://doi.org/10.1136/oem.2003.010074>.
- OECD. Sickness, Disability and Work: Breaking the Barriers: A Synthesis of Findings across OECD Countries. 2010.
- Sieurin L, Josephson M, Vingård E. Positive and negative consequences of sick leave for the individual, with special focus on part-time sick leave. *Scand J Public Health* 2009 Jan;37(1):50–6. <https://doi.org/10.1177/1403494808097171>.
- Bryngelson A. Long-term sickness absence and social exclusion. *Scand J Public Health* 2009 Nov;37(8):839–45. <https://doi.org/10.1177/1403494809346871>.
- Björkenstam E, Weitoft GR, Lindholm C, Björkenstam C, Alexanderson K, Mittendorfer-Rutz E. Associations between number of sick-leave days and future all-cause and cause-specific mortality: a population-based cohort study. *BMC Public Health* 2014 Jul;14:733. <https://doi.org/10.1186/1471-2458-14-733>.
- OECD. Sickness, Disability and Work: Keeping on Track in the Economic Downturn. Stockholm: OECD, 2009.
- Försäkringskassan (Swedish Social Insurance Agency). Social Insurance in Figures 2016. Stockholm, Sweden: Försäkringskassan (Swedish Social Insurance Agency) 2016.
- Lidwall U, Olsson-Bohlin C. Lång väg tillbaka till arbete vid sjukskrivning [Long road back to work after sick leave]. 2017.
- Harvey SB, Modini M, Joyce S, Milligan-Saville JS, Tan L, Mykletun A et al. Can work make you mentally ill? A systematic meta-review of work-related risk factors for common mental health problems. *Occup Environ Med* 2017 Mar;74(4):301–10. <https://doi.org/10.1136/oemed-2016-104015>.
- Dorner TE, Alexanderson K, Svedberg P, Ropponen A, Stein KV, Mittendorfer-Rutz E. Sickness absence due to back pain or depressive episode and the risk of all-cause and diagnosis-specific disability pension: A Swedish cohort study of 4,823,069 individuals. *Eur J Pain* 2015 Oct;19(9):1308–20. <https://doi.org/10.1002/ejp.661>.
- Narusyte J, Ropponen A, Alexanderson K, Svedberg P. The role of familial factors in the associations between sickness absence and disability pension or mortality. *Eur J Public Health* 2014 Feb;24(1):106–10. <https://doi.org/10.1093/eurpub/ckt039>.
- Lännerström L, Wallman T, Holmström IK. Losing independence--the lived experience of being long-term sick-listed. *BMC Public Health* 2013 Aug;13:745. <https://doi.org/10.1186/1471-2458-13-745>.
- Narusyte J, Ropponen A, Alexanderson K, Svedberg P. Genetic and Environmental Influences on Disability Pension Due To Mental Diagnoses: Limited Importance of Major Depression, Generalized Anxiety, and Chronic Fatigue. *Twin Res Hum Genet* 2016 Feb;19(1):10–6. <https://doi.org/10.1017/thg.2015.86>.
- Gjesdal S, Bratberg E. Diagnosis and duration of sickness absence as predictors for disability pension: results from a three-year, multi-register based* and prospective study. *Scand J Public Health* 2003;31(4):246–54. <https://doi.org/10.1080/14034940210165154>.
- Vaez M, Rylander G, Nygren A, Asberg M, Alexanderson K. Sickness absence and disability pension in a cohort of employees initially on long-term sick leave due to psychiatric disorders in Sweden. *Soc Psychiatry Psychiatr Epidemiol* 2007 May;42(5):381–8. <https://doi.org/10.1007/s00127-007-0189-9>.
- Leinonen T, Pietiläinen O, Laaksonen M, Rahkonen O, Lahelma E, Martikainen P. Occupational social class and disability retirement among municipal employees--the contribution of health behaviors and working conditions. *Scand J Work Environ Health* 2011 Nov;37(6):464–72. <https://doi.org/10.5271/sjweh.3182>.
- Alexanderson K, Leijon M, Akerlind I, Rydh H, Bjurulf P. Epidemiology of sickness absence in a Swedish county in 1985, 1986 and 1987. A three year longitudinal study with focus on gender, age and occupation. *Scand J Soc Med* 1994 Mar;22(1):27–34. <https://doi.org/10.1177/140349489402200105>.
- Haukenes I, Mykletun A, Knudsen AK, Hansen HT, Mæland JG. Disability pension by occupational class--the impact of work-related factors: the Hordaland Health Study Cohort. *BMC Public Health* 2011 May;11:406. <https://doi.org/10.1186/1471-2458-11-406>.
- Pietikäinen S, Silventoinen K, Svedberg P, Alexanderson K, Huunan-Seppälä A, Koskenvuo K et al. Health-related and sociodemographic risk factors for disability pension due to low back disorders: a 30-year prospective Finnish Twin Cohort Study. *J Occup Environ Med* 2011 May;53(5):488–96. <https://doi.org/10.1097/JOM.0b013e31821576dd>.
- Ropponen A, Silventoinen K, Svedberg P, Alexanderson K, Koskenvuo K, Huunan-Seppälä A et al. Health-related risk factors for disability pensions due to musculoskeletal diagnoses: a 30-year Finnish twin cohort study. *Scand J Public Health* 2011 Dec;39(8):839–48. <https://doi.org/10.1177/1403494811418283>.

21. Laaksonen M, Piha K, Rahkonen O, Martikainen P, Lahelma E. Explaining occupational class differences in sickness absence: results from middle-aged municipal employees. *J Epidemiol Community Health* 2010 Sep;64(9):802–7. <https://doi.org/10.1136/jech.2009.093385>.
22. Gjerde LC, Knudsen GP, Czajkowski N, Gillespie N, Aggen SH, Røysamb E et al. Genetic and environmental contributions to long-term sick leave and disability pension: a population-based study of young adult Norwegian twins. *Twin Res Hum Genet* 2013 Aug;16(4):759–66. <https://doi.org/10.1017/thg.2013.36>.
23. Harkonmäki K, Silventoinen K, Levälahti E, Pitkaniemi J, Huunan-Seppälä A, Klaukka T et al. The genetic liability to disability retirement: a 30-year follow-up study of 24,000 Finnish twins. *PLoS One* 2008;3(10):e3402. <https://doi.org/10.1371/journal.pone.0003402>.
24. Narusyte J, Ropponen A, Silventoinen K, Alexanderson K, Kaprio J, Samuelsson Å et al. Genetic liability to disability pension in women and men: a prospective population-based twin study. *PLoS One* 2011;6(8):e23143. <https://doi.org/10.1371/journal.pone.0023143>.
25. Svedberg P, Ropponen A, Alexanderson K, Lichtenstein P, Narusyte J. Genetic susceptibility to sickness absence is similar among women and men: findings from a Swedish twin cohort. *Twin Res Hum Genet* 2012 Oct;15(5):642–8. <https://doi.org/10.1017/thg.2012.47>.
26. Lichtenstein P, Sullivan PF, Cnattingius S, Gatz M, Johansson S, Carlström E et al. The Swedish Twin Registry in the third millennium: an update. *Twin Res Hum Genet* 2006 Dec;9(6):875–82. <https://doi.org/10.1375/twin.9.6.875>.
27. Magnusson PK, Almqvist C, Rahman I, Ganna A, Viktorin A, Walum H et al. The Swedish Twin Registry: establishment of a biobank and other recent developments. *Twin Res Hum Genet* 2013 Feb;16(1):317–29. <https://doi.org/10.1017/thg.2012.104>.
28. SCB (Statistiska Centralbyrån). [Standard för svensk yrkesklassificering (SSYK)]. SCB (Statistiska Centralbyrån); [December 14th 2017]; Available from: <https://www.scb.se/dokumentation/klassifikationer-och-standarder/standard-for-svensk-yrkesklassificering-ssyk/>.
29. Thell M. Rekommenderad indelning av arbetare och tjänstemän utifrån SSYK kod. [Recommended identification of blue and white collar workers, based on SSYK code] Stockholm: Yrkesregistret, Statistics Sweden; 2015.
30. Rothman K. *Epidemiology. An Introduction*. New York: Oxford University Press; 2002.
31. Andersson T, Alfredsson L, Källberg H, Zdravkovic S, Ahlbom A. Calculating measures of biological interaction. *Eur J Epidemiol* 2005;20(7):575–9. <https://doi.org/10.1007/s10654-005-7835-x>.
32. Kujala UM, Kaprio J, Koskenvuo M. Modifiable risk factors as predictors of all-cause mortality: the roles of genetics and childhood environment. *Am J Epidemiol* 2002 Dec;156(11):985–93. <https://doi.org/10.1093/aje/kwf151>.
33. Kausto J, Virta L, Luukkonen R, Viikari-Juntura E. Associations between partial sickness benefit and disability pensions: initial findings of a Finnish nationwide register study. *Bmc Public Health*. 2010 Jun 23;10:1–11. <https://doi.org/10.1186/1471-2458-10-361>
34. Gjesdal S, Bratberg E. The role of gender in long-term sickness absence and transition to permanent disability benefits. Results from a multiregister based, prospective study in Norway 1990–1995. *Eur J Public Health* 2002 Sep;12(3):180–6. <https://doi.org/10.1093/eurpub/12.3.180>.
35. Gjesdal S, Ringdal PR, Haug K, Maeland JG. Predictors of disability pension in long-term sickness absence. *Eur J Public Health*. 2004 Dec;14(4):398–405. <https://doi.org/10.1093/eurpub/14.4.398>
36. Geyer S, Hemstrom O, Peter R, Vagero D. Education, income, and occupational class cannot be used interchangeably in social epidemiology. Empirical evidence against a common practice. *J Epidemiol Community Health*. 2006 Sep;60(9):804–10. <https://doi.org/10.1136/jech.2005.041319>
37. Cote P, van der Velde G, Cassidy JD, Carroll LJ, Hogg-Johnson S, Holm LW, et al. The burden and determinants of neck pain in workers - Results of the bone and joint decade 2000–2010 task force on neck pain and its associated disorders. *Spine*. 2008 Feb 15;33(4):S60–S74. <https://doi.org/10.1097/BRS.0b013e3181643ee4>
38. Bongers PM, Kremer AM, ter Laak J. Are psychosocial factors, risk factors for symptoms and signs of the shoulder, elbow, or hand/wrist?: A review of the epidemiological literature. *Am J Ind Med*. 2002 May;41(5):315–42. <https://doi.org/10.1002/ajim.10050>
39. Uher R. The role of genetic variation in the causation of mental illness: an evolution-informed framework. *Mol Psychiatr*. 2009 Dec;14(12):1072–82. <https://doi.org/10.1038/mp.2009.85>

Received for publication: 4 June 2018